



Rupert Street, Lower Pilsley, Chesterfield, Derbyshire S45 8DB

 5

 2

 2

 EPC

£575,000

P I N E W O O D





# Rupert Street Lower Pilsley Chesterfield Derbyshire S45 8DB



**£575,000**

**5 bedrooms  
2 bathrooms  
2 receptions**

- DOUBLE HEIGHT EXTENSION TO THE REAR - THREE FLOORS OF VERSATILE FAMILY SIZED ACCOMMODATION
  - FULLY AND COMPREHENSIVELY RENOVATED TO A HIGH STANDARD
  - SEMI RURAL LOCATION WITH FAR REACHING COUNTRYSIDE VIEWS
- GROUND FLOOR WC - STUNNING FAMILY BATHROOM - GRAND OPEN PLAN ENSUITE TO MAIN BEDROOM
  - SUPERB KITCHEN BREAKFAST ROOM BEING OPEN PLAN TO THE FAMILY/DINING ROOM
  - AMPLE DRIVEWAY PARKING AND SINGLE BRICK BUILT DETACHED GARAGE
- VERSATILE BEDROOM/MULTI USE ROOM TO 2ND FLOOR WITH PLENTY OF EAVES STORAGE
  - SPACIOUS SEPERATE LOUNGE AREA - PERFECT FOR RELAXING
- GAS CENTRAL HEATING - ALUMINIUM DOUBLE GLAZED WINDOWS - COUNCIL TAX BAND B
- EASY ACCESS TO THE M1 MOTORWAY, CLAY CROSS, CHESTERFIELD AND LOCAL VILLAGE AMENITIES





A STUNNING RENOVATED FAMILY HOME IN A SOUGHT-AFTER SEMI-RURAL LOCATION WITH SUPERB COUNTRYSIDE VIEWS TO THE REAR

Situated in the heart of Lower Pilsley, this delightful five-bedroom detached family home offers over 2,622 sq ft of exceptionally well-proportioned and tastefully appointed accommodation. Having undergone a full comprehensive renovation, including a double-height extension to the rear, this property boasts a truly contemporary finish throughout.

Enter through a porch area with utility room, leading to the main entrance hallway. Here, you'll find a WC and stairs rising to a bright galleried landing.

The luxurious kitchen breakfast room is a true highlight, featuring sleek anthracite soft-close units, elegant gold fittings, breakfast bar and high-spec integrated appliances. It seamlessly connects to an open-plan family/dining room, where impressive six-panel aluminium bi-folding doors open directly to the garden, creating the perfect space for entertaining guests.

Upstairs the stunning family bathroom offers both a walk-in shower and a separate bath. The main double bedroom boasts a sumptuous open-plan en-suite, which features a freestanding bath with lovely views, convenient Jack and Jill sinks, and a large walk-in shower with coordinating gold fittings. With two further double bedrooms, one with built-in wardrobes, and a versatile single bedroom, ideal for a guest room, office or nursery. To the second floor, you'll find a large versatile space, offering eaves storage and stunning views.

The rear garden offers expansive patio area, pagoda and astro turf, it truly shines with superb, far-reaching views across open countryside, to the front is driveway parking for several cars and a detached brick-built single garage.

The location is ideal, offering easy access to local amenities in Clay Cross, a short drive to Chesterfield, M1 motorway, and close proximity to the village amenities and Five Pits Trail for enjoyable walks

VIDEO TOUR AVAILABLE

**Porch**

9'9" x 4'11" (2.98 x 1.50)

Step into a charming entrance porch, beautifully adorned with decorative tiled flooring and elegant painted decor. The space is kept warm with a stylish radiator, while a modern composite door with a glazed frosted panel allows natural light to filter in. A vaulted ceiling with inset spotlights adds a sense of grandeur, and a glazed door seamlessly leads through to the welcoming hallway. The perfect introduction to this wonderful home.

**Entrance Hall/Stairs and Landing**

Step into the welcoming entrance hall, featuring attractive wood-effect vinyl flooring and tasteful painted decor. A contemporary composite door with a full-length glazed panel allows for ample natural light, complemented by an Arlo doorbell. The hall also benefits from a radiator, convenient storage area, and modern inset spotlights. A true highlight, the galleried landing offers a sense of grandeur and openness. It features practical yet beautiful wood-effect vinyl flooring, painted decor, a radiator, and integrated inset spotlights, ensuring a well-lit and inviting upper level.

**Utility Room**

6'4" x 5'10" (1.87 x 1.78)

A dedicated utility room offers excellent convenience, boasting wooden laminate flooring and painted decor. It comes equipped with plumbing and space for your washer and tumble dryer, an extractor, and inset spotlights, all naturally lit by a UPVC frosted window.

**Ground Floor WC**

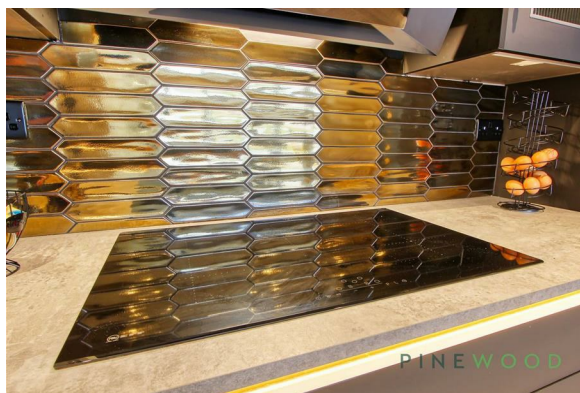
5'8" x 2'11" (1.75 x 0.89)

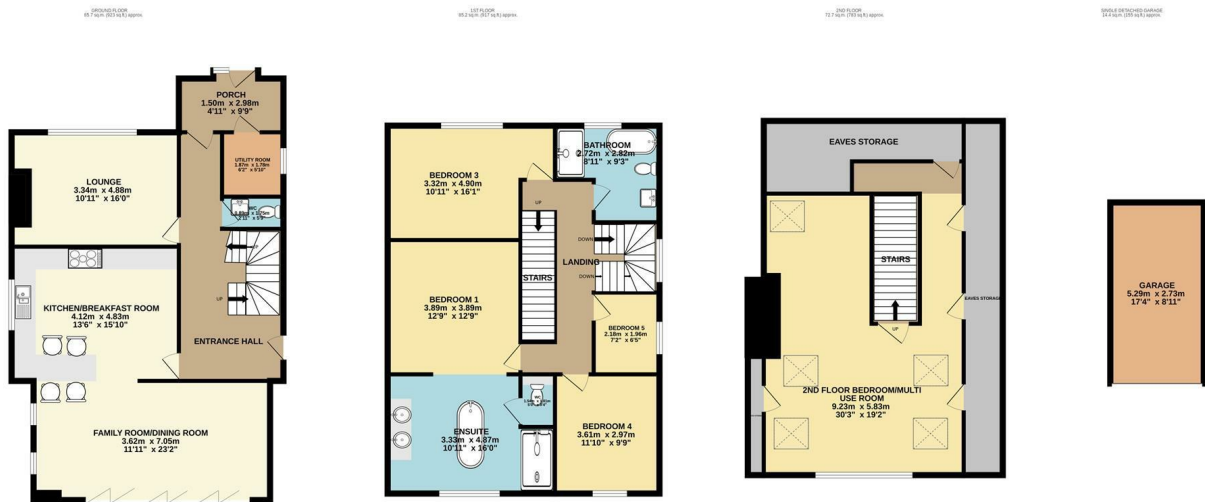
A well-appointed ground floor WC offers ultimate convenience. This space boasts attractive wooden laminate flooring, a low flush WC, and a contemporary wall-mounted vanity unit with a chrome mixer tap. Privacy is assured with a UPVC frosted window, and a wall-mounted radiator completes this practical yet smart room.

**Kitchen/Breakfast Room**

15'10" x 13'6" (4.83 x 4.12)

Step into this exceptional kitchen, a perfect blend of style and functionality, laid with attractive wood-effect vinyl flooring and finished with painted decor. The focal point is the generous breakfast bar, ideal for casual dining, set against durable laminated worktops. Storage is abundant with anthracite gloss soft-close drawers, wall and base units, all beautifully highlighted by plinth and under-worktop lighting. The kitchen boasts a suite of high-quality appliances, including a AEG 5-ring induction hob with a powerful AEG extractor, a convenient Neff Hide & Slide oven, and a versatile Neff combi/microwave. The composite 1.5 bowl sink is fitted with a chic gold mixer tap featuring a practical spray hose, adding a touch of elegance. An integrated AEG dishwasher and space for an American fridge freezer complete this well-equipped culinary space. Natural light streams in through the aluminium double-glazed window, while inset spotlights provide ample illumination. The vibrant gold tiled surrounds add a unique and sophisticated flair.





TOTAL FLOOR AREA : 258.0 sq.m. (2777 sq.ft.) approx.

Whilst every attempt has been made to ensure the accuracy of the floorplan contained here, measurements of doors, windows, rooms and any other items are approximate and no responsibility is taken for any error, omission or mis-statement. This plan is for illustrative purposes only and should be used as such by any prospective purchaser. The services, systems and appliances shown have not been tested and no guarantee as to their operability or efficiency can be given.

Made with Metropix ©2025

Energy Efficiency Rating		
	Current	Potential
Very energy efficient - lower running costs		
(92 plus) <b>A</b>		
(81-91) <b>B</b>		
(69-80) <b>C</b>		
(55-68) <b>D</b>		
(39-54) <b>E</b>		
(21-38) <b>F</b>		
(1-20) <b>G</b>		
Not energy efficient - higher running costs		
England & Wales	EU Directive 2002/91/EC	

## Family/Dining Room

Seamlessly flowing from the kitchen breakfast room, the open-plan family room provides a wonderfully versatile space for modern living. It boasts attractive wood-effect vinyl flooring and a fresh, painted decor. Flooded with natural light, this impressive area features expansive six-panel aluminium bi-folding doors that open directly to the outside, complemented by two additional aluminium windows. Two radiators ensure year-round comfort, while inset spotlights provide a stylish and adaptable lighting scheme.

## Lounge

16'0" x 10'11" (4.88 x 3.34)

Step into the stylish lounge, beautifully presented with a soft, neutral carpet and contemporary neutral painted decor. This relaxing space benefits from a UPVC window, a radiator for comfort, and sleek inset spotlights, perfect for unwinding.

## Bedroom One

12'9" x 12'9" (3.89 x 3.89)

Step into the luxurious main double bedroom, conveniently located on the first floor. This inviting retreat features painted décor, radiator and attractive wood-effect vinyl flooring and boasts a seamless open-plan connection to a stunning en-suite, creating a sophisticated and private sanctuary.

## Ensuite to Bedroom One

15'11" x 10'11" (4.87 x 3.33)

Connected directly to the main bedroom, the open-plan en-suite is a masterpiece of modern design. It's finished with attractive wood-effect vinyl flooring and painted decor, featuring a wall-mounted radiator. The space is fully tiled and includes a luxurious freestanding bath with a sleek floor-standing gold mixer tap. Dual Jack and Jill sinks are fitted with elegant gold mixer taps on a chic vanity unit, accompanied by light-up mirrors. A spacious walk-in shower area comes with an obscure glass screen, coordinating gold fittings, and a mixer tap, with an extractor and inset spotlights ensuring a bright and fresh environment. A prominent full length aluminium double-glazed full-length window completes this impressive space ensuring lovely views from the bath whilst relaxing.

## Separate WC to Bedroom One

5'0" x 3'3" (1.54 x 1.01)

Enjoy the privacy of the ensuite WC to Bedroom One, fitted with contemporary wood-effect vinyl flooring and a fresh, painted finish. This space includes a low flush WC, part-tiled walls, and chic gold fittings, all illuminated by discreet inset spotlights.

## Bedroom Two/Multi Use Room

30'3" x 19'1" (9.23 x 5.83)

Ascend to the impressive Bedroom Two, a spectacular top-floor sanctuary spanning the full length and width of the house. This expansive room boasts attractive wood-effect vinyl flooring, a fresh painted decor, and a radiator for comfort. Natural light floods the space through six skylights and additional full length aluminium window, offering delightful views. Clever eaves storage maximises the usable space, making this a truly versatile and appealing space, perfect for a large bedroom with dressing area, office, gym etc

## Bedroom Three

16'0" x 10'10" (4.90 x 3.32)

Explore the potential of Bedroom Three, an excellent space currently utilised as a dressing room. This bright room is fitted with wood-effect laminate flooring, painted walls, and a UPVC window. It offers comfort with a radiator, contemporary inset spotlights, and essential built-in wardrobes for organised living.

## Bedroom Four

11'10" x 9'8" (3.61 x 2.97)

Enjoy a serene retreat in Bedroom Four, situated at the rear with picturesque views through its impressive full-length aluminium window. The room is finished with durable wood-effect vinyl flooring, a contemporary painted decor, and a radiator for comfort. The perfect guest bedroom.

## Bedroom Five

7'1" x 6'5" (2.18 x 1.96)

The versatile fifth bedroom is an ideal space for a nursery, study, or guest room. Fitted with practical wood-effect vinyl flooring, it offers a clean, painted finish. A UPVC frosted window, radiator, and inset spotlights ensure comfort and functionality within this charming room

Mansfield branch  
24 Albert Street  
Mansfield, NG1  
01623 621001

Clowne branch  
26 Mill Street,  
Clowne, S43 4JN  
01246 810519

Clay Cross branch  
20 Market Street,  
Clay Cross, S45 9JE  
01246 251194

Chesterfield branch  
33 Holywell Street,  
Chesterfield, S41 7SA  
01246 221039



# PINEWOOD